

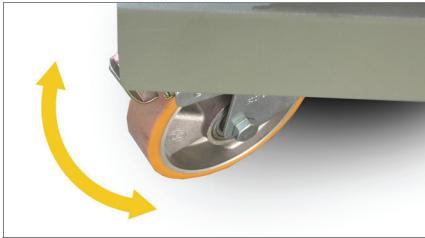
emmegi

Aluminium  
Steel  
PVC

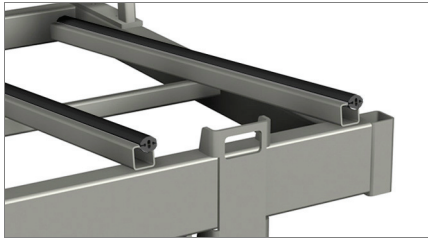
en #1

# WT 450

Trolley



Swivelling castors 01



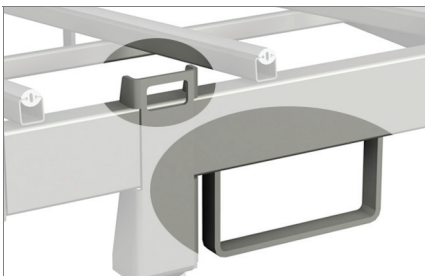
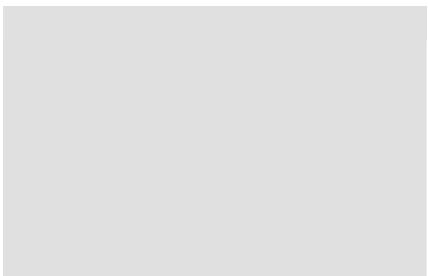
Anti-slip PVC contact surface 02



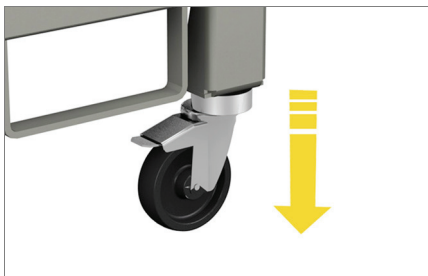
A correct flow of materials, whether semi-finished or finished products, or parts in the assembly phase, plays an important role in rationalizing and optimizing the production cycle. The Emmegi Logistics line offers companies a concrete solution to all storage, handling and assembly problems.

WT 450 is a trolley used at the end of the line as a single tool for storing the finished doors and windows in the factory and transporting them to the worksite.

Lifting configuration 03



Transporting configuration 04



# WT 450

Trolley

## 01 Swivelling castors

The trolley has 4 swivelling castors, 2 with brakes, which ensure great mobility and easy handling. The brakes enable it to be locked in position in the various work areas.

## 02 Soft anti-slip PVC contact surface

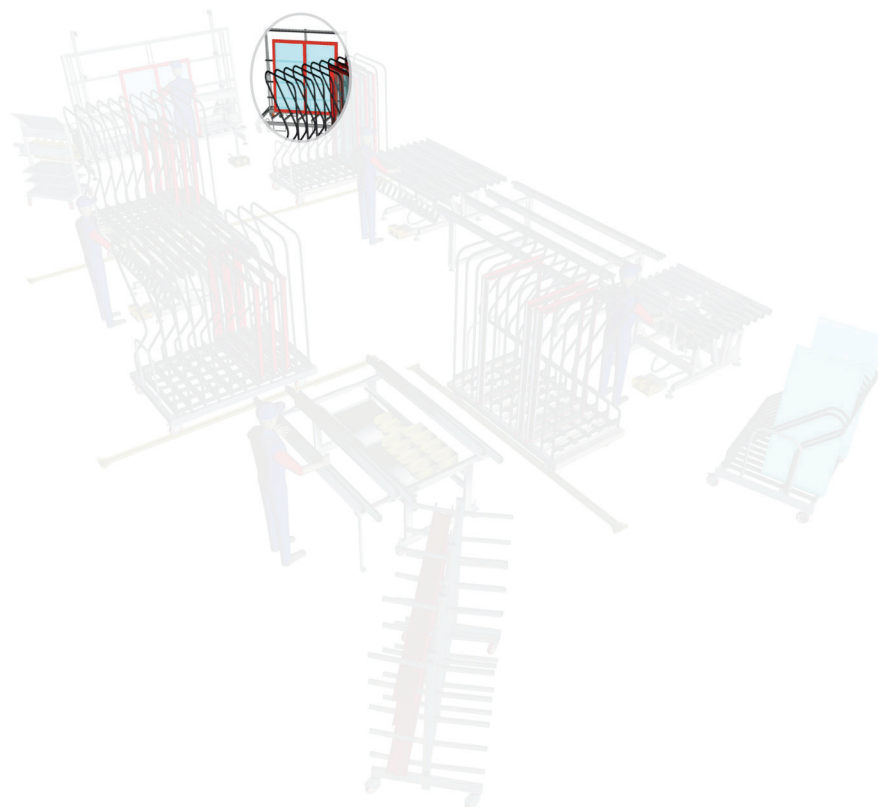
The contact surfaces are coated with soft anti-slip PVC which ensures that the frame is supported securely when it is put into position.

## 03 Lifting configuration

Enables the trolley to be lifted with ease by a fork lift truck as it has slots for the forks. It also has a set of hooks that enable it to be lifted by a crane.

## 04 Transporting configuration

The swivelling castors with brakes may be removed extremely quickly and easily so that the trolley can be rested on its rubber feet to ensure safe transport on lorries.



### TECHNICAL CHARACTERISTICS

Lifting and suspending hooks	
Modular structure base (mm)	970 x 1730
Modular structure height (mm)	1805
Removable castors for safe road transport	
Soft anti-slip PVC contact surfaces	
4 swivelling castors, 2 with brake (mm)	ø 125