

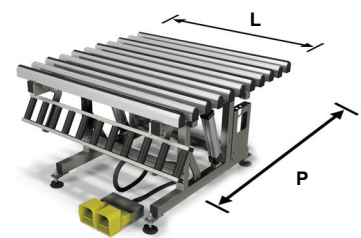
**Fit T**  
Assembly bench

Soft anti-slip PVC contact surface 01

Tilting work table 02



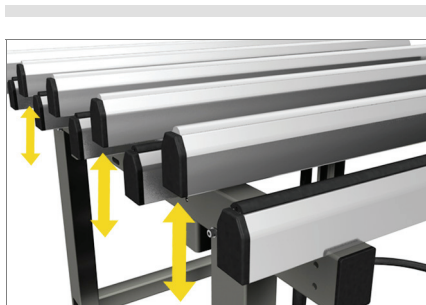
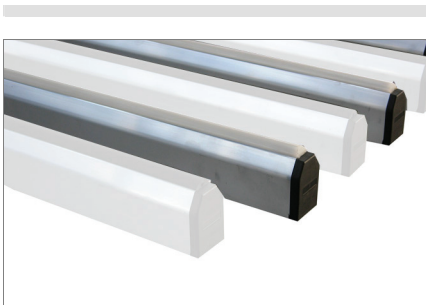
Sash and casement assembly bench. Tilting table from 0° (horizontal) to 85°, with pneumatic exchange between the soft PVC resting surface (for assembly operations) and the anti-friction hard PVC resting surface (for handling operations). The roller conveyor can be manually tilted and it is adjustable in height (from 170 to 460 mm) independently from the work table height. The work table height is adjustable from 895 to 965 mm and the mounting feet are complete with holes for floor anchoring.



Hard anti-friction contact surface 03

Pneumatic surface changer 04

Roller conveyor 05



# Fit T

## Assembly bench

### 01 Soft anti-slip PVC contact surfaces

The contact surfaces are coated with anti-slip PVC rubber which ensures that the frame is supported securely when it is put into position.

### 02 Tilting work table

The work table can be swung with fully pneumatic movement. Using the foot switch control it can be tilted from 0° (horizontal position) to 85°.

### 03 Hard anti friction PVC contact surfaces

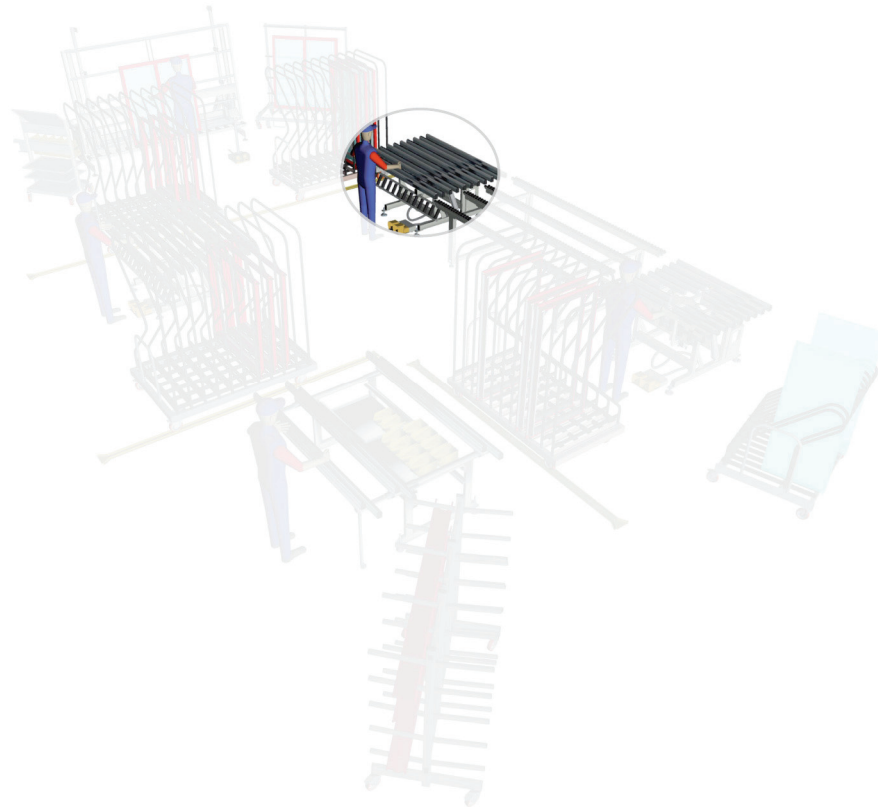
The polyethylene contact surface ensures smooth movement of the frame and easy handling.

### 04 Pneumatic surface changeover

An air cylinder system controls changeover by moving the polyethylene contact surface above the PVC contact surface.

### 05 Roller conveyor

A manually tilted roller conveyor, made up of rollers mounted on a rod and automatically locking into 2 preset positions may be used to move the frame horizontally, ensuring smooth movement and easy handling.



#### TECHNICAL CHARACTERISTICS

Length (depending on model) (mm)	1400 – 2000
Depth (mm)	1400 – 1600
Weight (Kg)	135
Max. load (Kg)	120
Air consumption/cycle (nL)	25
Work table height (mm)	895 ÷ 965
Roller conveyor height (mm)	170 ÷ 460